

The background of the slide features a series of horizontal, wavy lines in black and white, creating a sense of movement and depth. In the upper right corner, there is a faint, light-colored map of the United States.

BETTER CONNECTIONS

How Regional Planning Commissions and
Councils of Government Can Help Propel
Your Broadband Project Forward



kaysinger
BASIN RPC

Kaysinger Basin Regional Planning Commission

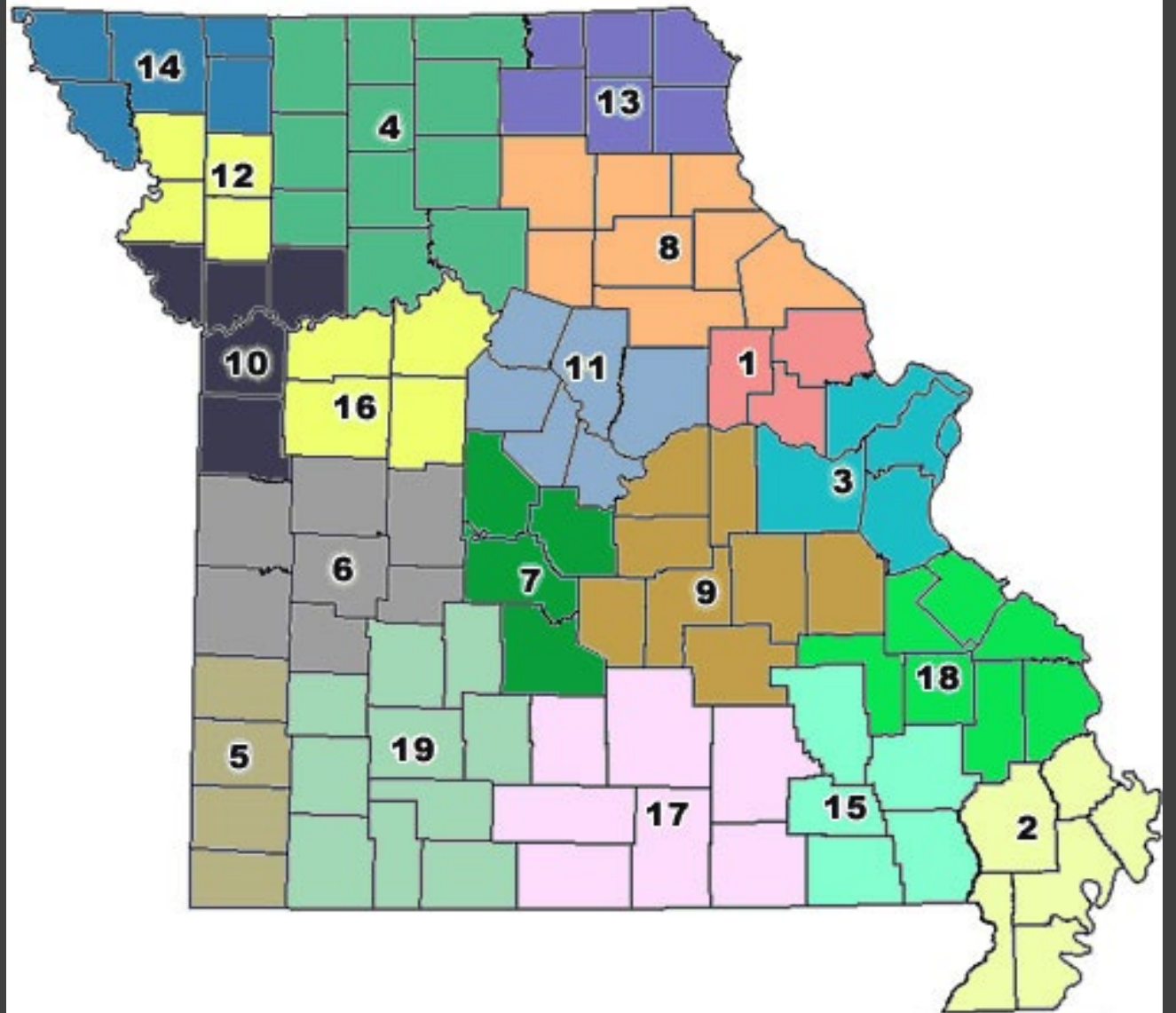
Bates, Benton, Cedar, St. Clair, Vernon, Hickory and Henry Counties

Sheridan Garman-Neeman

WHAT ARE REGIONAL PLANNING COMMISSIONS?

[HTTP://MACOG.ORG/REGIONAL-COUNCIL-RPCS/](http://MACOG.ORG/REGIONAL-COUNCIL-RPCS/)

WHO IS YOURS?





WHAT DO THEY DO?

Regional Planning Commissions and Councils of Government are regional development organizations that serve their local government members and communities with a variety of services including low-cost/no-cost planning, grant writing and administration and various activities to enhance the economic vitality of their communities.

What Resources do Regional Planning Commissions Bring to Bear?

- ☐ Capital Investment Funding Strategies
- ☐ Community Development
- ☐ Economic Development
- ☐ Local Government Reach
- ☐ Urban Planning Expertise
- ☐ GIS
- ☐ Community Outreach
- ☐ Transportation Planning/ MoDOT partnership
- ☐ Grant Writing and Administration

Sample Broadband Projects around Missouri

Ozark Foothills Regional Planning Commission contracted with Agri Experts (Keith Eisberg and Abner Womack with MU) to quantify the economic impact of lack of broadband. They used this information as support documentation in grant applications and to recruit not only providers, but also local leaders to join their effort to expand access. They used that information to write a CDBG grant to assist a county with fiber buildout.

Bootheel regional planning commission wrote a CDBG CV grant for Stoddard County and the City of Puxico. They will receive fiber broadband due to their efforts. Another project where the county and city committed ARPA funds along with the CV funds.

The U.S. Department of Commerce's Economic Development Administration (EDA) is awarding a \$613,750 CARES Act Recovery Assistance grant to the Missouri Association of Councils of Government (MACOG), Jefferson City, Missouri, to develop broadband feasibility plans and provide technical assistance across the state. This EDA grant will be matched with \$613,750 in state investment. Rural counties across Missouri will receive technical assistance in broadband planning and development.

An abstract graphic on the left side of the slide. It features a light gray background with a faint grid of lines and dots. Overlaid on this are numerous squares of various colors (green, purple, blue, orange, pink, black, and gray) of different sizes. Some squares are solid, while others are outlined. They are connected by thin black lines, creating a network-like structure. The squares have a slight 3D effect with shadows.

Work With GEO Analytics

◦ **GEO software is the integration of software and software derived services, written and licensed by Breaking Point Solutions, which was specifically designed to perform broadband modeling, costing, and financial analysis for communities, counties, or any organization that has territorial boundaries.**

- ❑ Cost of broadband projects.
- ❑ Mapping Speed tests
- ❑ Rank network & business models by relevant factors
- ❑ Library access to every cost study you've created
- ❑ Explore optional network deployments
- ❑ Analyze potential projects for competitive viability.
- ❑ <https://www.geopartnersllc.com/>

- Kaysinger Basin has worked with the city of Warsaw and COMO electric cooperative for several years to come to a funding solution for fiber. The city of Warsaw just signed a contract with COMO and the design build starts at the end of January!

Warsaw

Households	1,085
Population	2127
Test locations	219
Total Tests	258
Percent participation	20.18%
Participation goal (10%)	109

Download

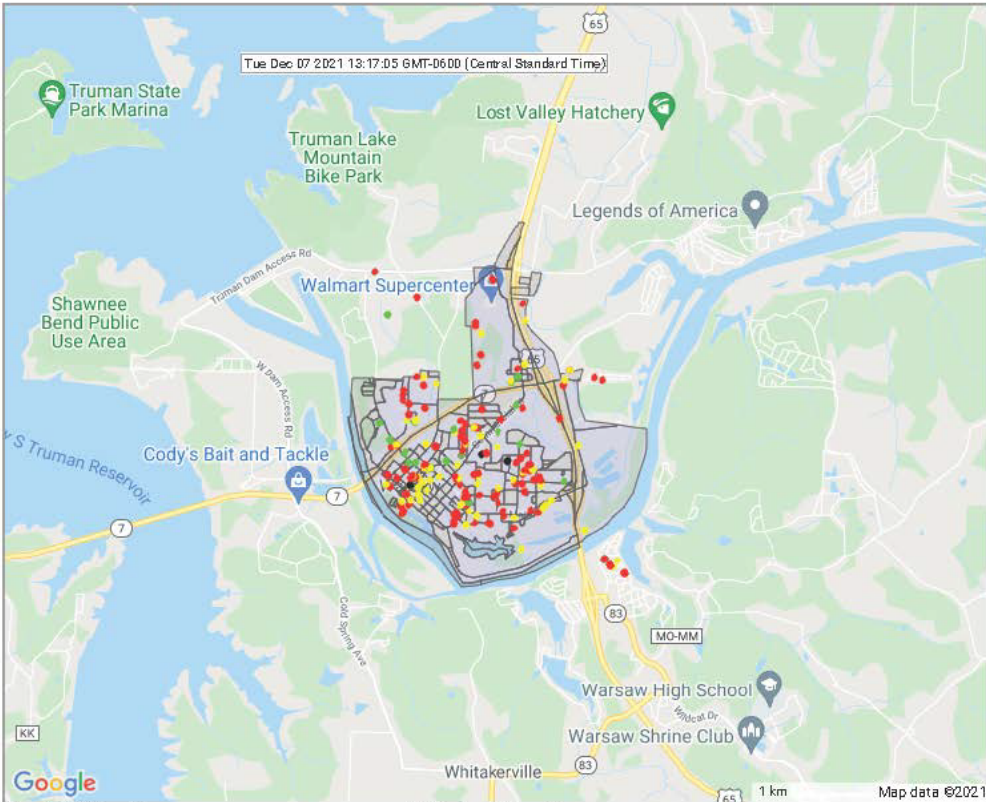
• No Service	3	1.4%
• 0-10 Mbps	112	51.1%
• 10-25 Mbps	64	29.2%
• 25-500 Mbps	23	10.5%
• 500+ Mbps	0	0.0%

Upload

No Service	3	1.4%
<3 Mbps	155	70.8%
3-10 Mbps	25	11.4%
10-25 Mbps	8	3.7%
> 25 Mbps	11	5.0%

	Min	Max	Med Mbps
Download	0.01	412.79	17.73
Upload	0.01	519.48	1.05
No service reasons: may total > 100%			
Not Available			66.67%
Too Expensive			66.67%

Prominent ISPs	6 of 16
CenturyLink	89 44.06%
AT&T Mobility LLC	41 20.30%
CenturyLink Communications, LLC	19 9.41%
Rocket Connect LLC	14 6.93%
T-Mobile USA, Inc.	6 2.97%
Facebook, Inc.	5 2.48%



Fixed 153 locations

Download		Upload	
No Service	3 2.0%	No Service	3 2.0%
0-10 Mbps	91 59.5%	<3 Mbps	124 81.0%
10-25 Mbps	48 31.4%	3-10 Mbps	11 7.2%
25-500 Mbps	11 7.2%	10-25 Mbps	4 2.6%
500+ Mbps	0 0.0%	> 25 Mbps	9 5.9%

Cellular 49 locations

Download		Upload	
0-10 Mbps	21 42.9%	<3 Mbps	31 63.3%
10-25 Mbps	16 32.7%	3-10 Mbps	14 28.6%
25-500 Mbps	12 24.5%	10-25 Mbps	4 8.2%
500+ Mbps	0 0.0%	> 25 Mbps	0 0.0%

CAF Areas

RDOF Areas

74.89% < 25/3
92.24% < 100/20



RECONNECT: HOW CAN WE HELP?

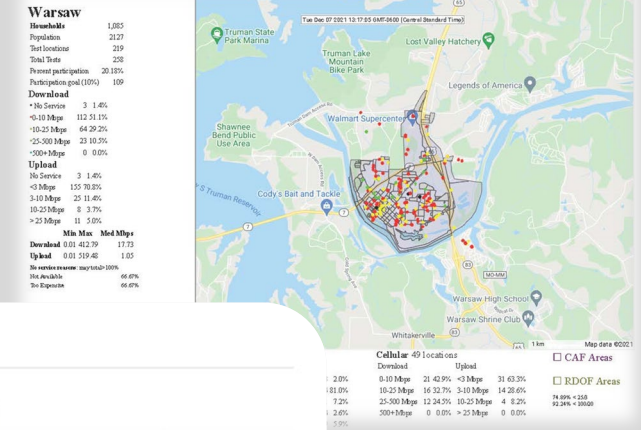
Project Development, Grant Writing & Administration

1. Determining Eligibility

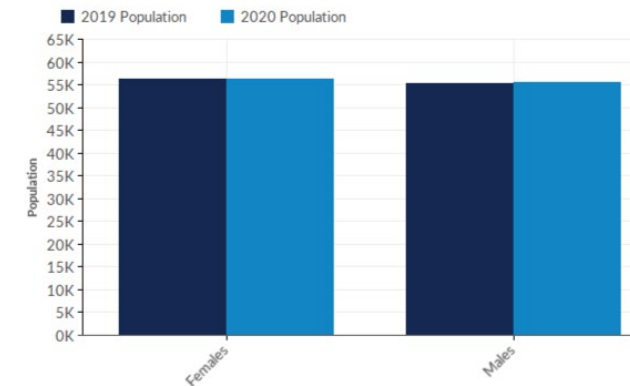
Is your community eligible? RPCs have access to extensive data sets in order to determine eligibility.

What are the speeds in your community?

Your RPC can map the speeds in order to determine eligibility as well as map the PFSA.



Population by Gender



Gender	2019 Population	2020 Population	Change	% Change	2020 % c Cohort
Females	56,199	56,327	128	0%	50.32%
Males	55,363	55,603	240	0%	49.68%
Total	111,562	111,930	368	0%	100.00%

2. Pre-Application, the environmental review.

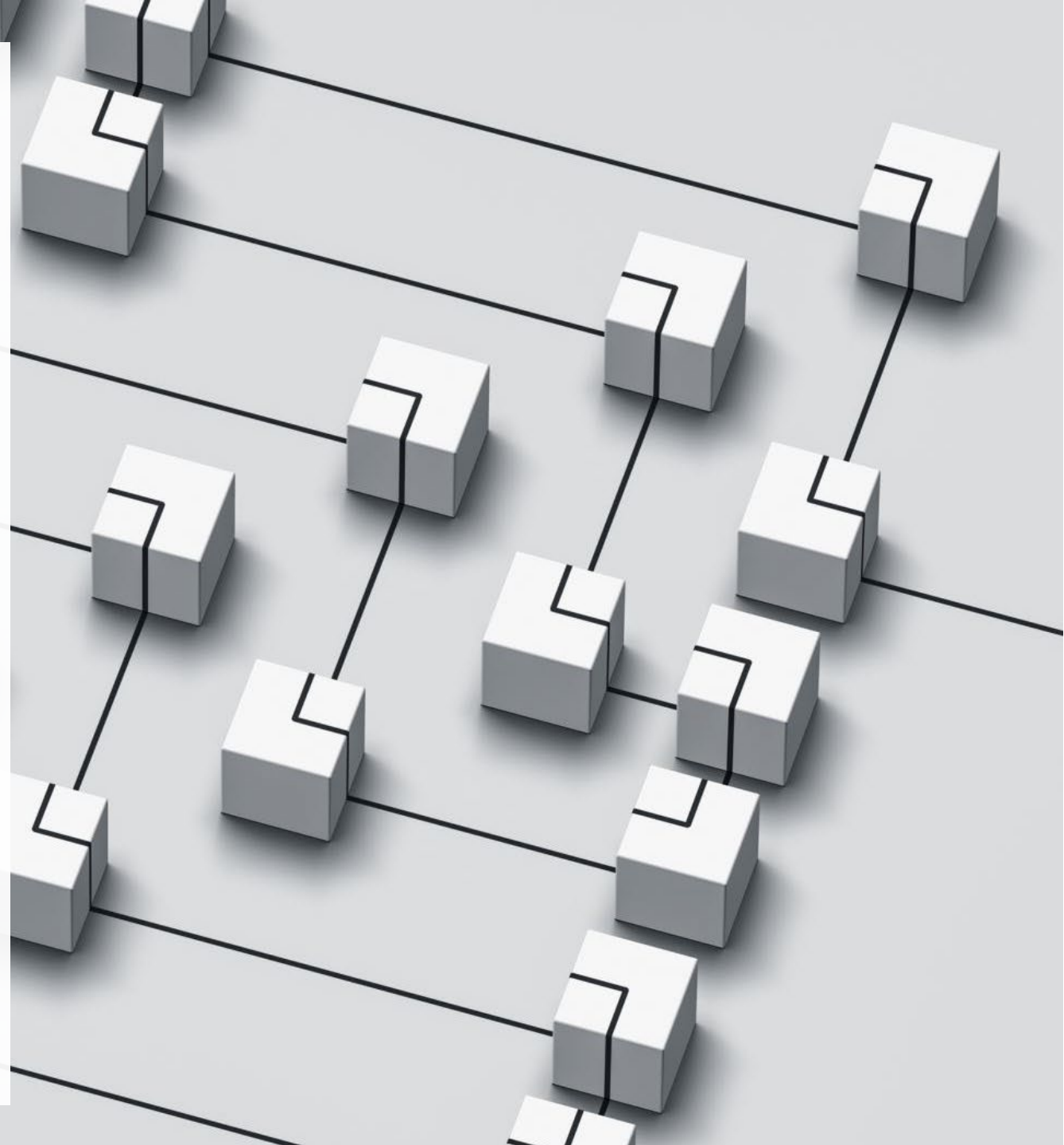
- RPCs can do the environmental review for you for a fair price. Remember: 5% of the award can go to pre-application expenses.

3. Application and Submission

- RPCs are experienced in writing grant applications and administering these grants. Check with your RPC on associated costs.
- RPCs are experienced at managing bureaucracy!

Working together on project development and application submission.

- Sit down and go through the application together. Outline which pieces the RPC can handle, and which pieces the potential grantee will be able to handle. RPCs are not fiber experts-system design, buildout timelines and more will need to be created by the provider.
- Go through the application piece by piece and decide who will do which parts, when.
- Create a timeline together of when each of you will do each piece. Build in a submission deadline of a week early.





SCORING

Each section in the scoring section must be thoroughly addressed.

Scoring: The application body

01

Rurality: points are awarded for serving the least dense areas. Your RPC can assist with the outreach here—they have a direct line to local governments!

02

Economic need of the community: Did I mention we are good at data?

03

Affordability: This section will need to be a joint effort. Only the grantee can determine what they can afford to serve the area at.

Scoring: Continued

4. Labor Standards : This section will likely need to be a collaborative effort.

5. Tribal Lands: If applicable the RPC can assist with mapping.

6. Local Governments, Non-profits and cooperatives:
Who are you?

Scoring: Continued

7. Socially Vulnerable Communities : Your RPC can help make this determination.

8. Net Neutrality: The provider needs to provide this statement.

9. Wholesale Broadband Services: The provider needs to do this section, but the RPC can write it up.

GRANT ADMINISTRATION

Your RPC can administer the grant for you, for a fee. An experienced grant administrator is a must.

Create a grant administration agreement prior to submitting the grant, based on the budget.

The budget documents should be a joint effort-you know your budget and the RPC knows how federal grant budgets work.





Ready to contact your RPC?

- Go to this link and use this map to determine who your RPC is.
- <http://macog.org/regional-council-rpcs/>
- Good luck!



Sheridan Garman-Neeman Kaysinger Basin Regional Planning Commission

- sgarman@kaysinger.com
- Office: 660-885-3393
- Cell: 417-309-9662
- www.Kaysinger.com
- <https://www.facebook.com/kaysinger.rpc>
- [linkedin.com/in/sheridangarmanneemanxecdirectorofkaysinger](https://www.linkedin.com/in/sheridangarmanneemanxecdirectorofkaysinger)
- <http://macog.org/>